



# SPECIFICATION

**Model: QX3202VDL (H)**

COMPRESSOR DRAWING LIST		
COMPRESSOR DIMENSIONS	QX32-WX	
PERFORMANCE CURVE	QX32-TX	
RUBBER GROMMET	QX32-35	
GROMMET SLEEVE	QX32-36	
ACCESSORY PARTS LIST		
ITEMS	Q'TY	REMARKS
Drive Board	1	ACRC-DB 3010
Rubber GORMMENT	3	
GROMMENT SLEEVE	/	
Screw of Compressor	/	
Washer of Compressor	/	
Please in strict accordance with the drawings requirements and fittings required to install the compressor.		



# ROTARY COMPRESSOR SPECIFICATION SHEET



<b>Model: QX3202VDL(H)</b>	Page : 1

APPLICATION			
Sort	Portable Cooling System		
Type	Hermetic Rotary Electrical Motor Compressor		
Refrigerant	R-134a		
Source of Electricity	Inverter for BLDC motor		
NOMINAL PERFORMANCE			
Conditions	HBP	LBP	
Rotation Number (rpm)	4,500	4,500	
Cooling capacity (Btu/h)	1,876	682	±10%
Max Current (A)	12.5	12.5	±10%
Current (A)	1 ~ 8	1 ~ 8	
Noise	≤48DB		
Vibration	≤0.65 m/s <sup>2</sup>		
* Data may be changed. Only for reference.			

### Testing Conditions

		HBP		LBP
Condensing Temperature .....	130 °F	(54.4 °C)	130 °F	(54.4 °C)
Evaporating Temperature .....	45 °F	(7.2 °C)	-10 °F	(-23.3 °C)
Return Gas Temperature .....	73 °F	(22.7 °C)	90 °F	(32.2 °C)
Liquid Temperature .....	115 °F	(46.1 °C)	90 °F	(32.2 °C)
Ambient Temperature .....	95 °F	(35.0 °C)	90 °F	(32.2 °C)
Compressor Cooling .....	1 m/s air cooling			
Drive Board.....	ACRC-DB 3010			

### COMPRESSOR STRUCTURE & DATA

Type	Hermetic type motor compressor
Pressure Inside Closed Container	Discharging Pressure
Pump Type	Rotary type
Cylinder Volume	3.25cc/rev
Refrigerator Oil Type	-32H,RB68EP or Equivalent Performance
Injected Oil Volume	80cc
Weight	2.26KG(Including Refrigerator oil)
Suction Pipe Inner Diameter	6.04mm
Discharge Pipe Inner Diameter	6.03mm

# ROTARY COMPRESSOR SPECIFICATION SHEET



<b>Model: QX3202VDL(H)</b>	<b>Page : 2</b>

MOTOR TYPE	
Motor Type	Brushless DC Permanent Magnetic Motor
Pole/Phase No.	10 Pole 5 Phase
Magnetic Type	NdFeB
Insulation Class	E CATEGORY (Insulation Material PPS or PBT)
Winding Resistance (L-L)	0.3(20°C) Ω

ELECTRICAL COMPONENTS	
ELECTRICAL COMPONENTS	
Operation Inverter	Drive Board, D.C. voltage 24V (refer.)

POWER SUPPLY	
Rated Voltage	BLDC, DC 24V (Drive Board input)
Voltage Range(V)	DC 20V~32V

CHARACTERISTICS	
Hydrostatic strength test (Low)	Strength pressure 7.45MPa (76kg/cm <sup>2</sup> )
Hydrostatic strength test (High)	Strength pressure 16.2MPa (165kg/cm <sup>2</sup> )
Residual moisture / Residual impurities	100mg Max / 100mg Max
Insulation Resistance	0.3Ω min. (with 500V D.C mega tester)
Withstand Voltage	00V-1sec(1250V-1min) Leakage current is less than 2.

# MOTOR SPECIFICATION SHEET



<b>Model: QX3202VDL(H)</b>	<b>Page : 3</b>

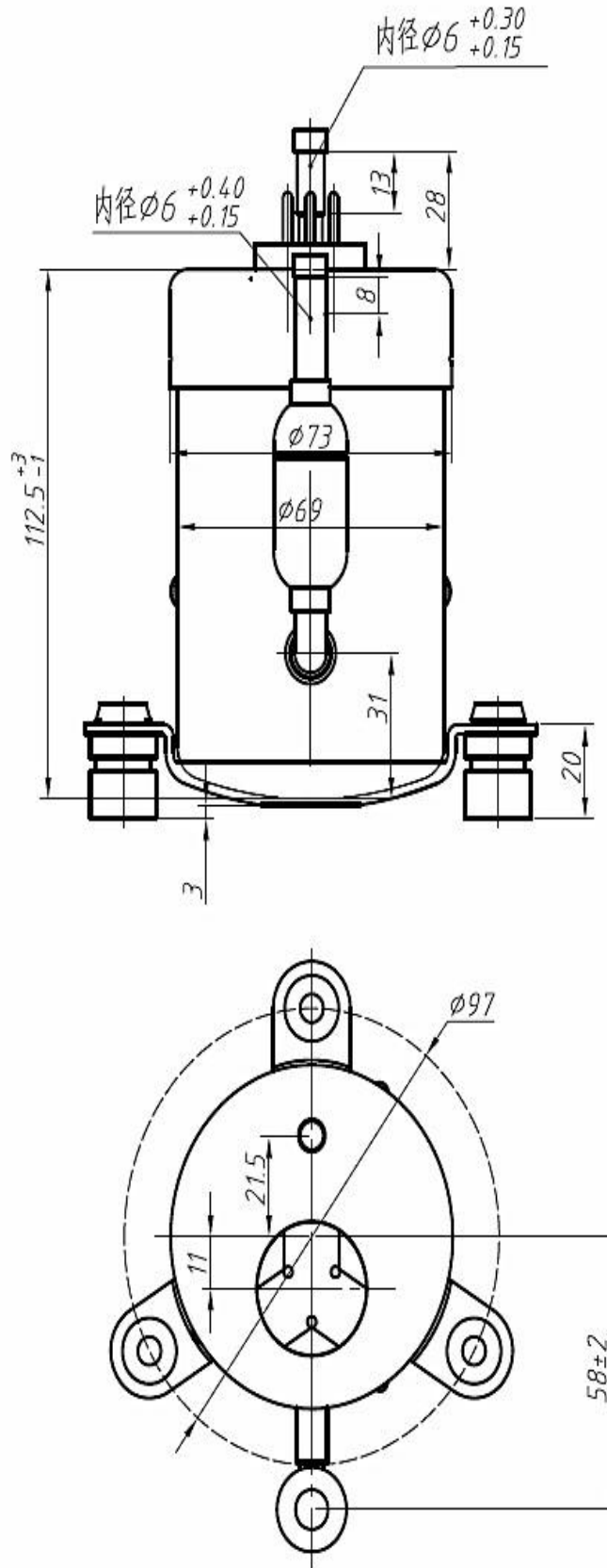
MOTOR SPECIFICATION		
ITEM	MODEL	QX3202VDL(H)
	Voltage	20 ~ 32V
Resistance (L-L)	$\Omega$ (at 20°C)	0.3
Drive Board	Variable Speed	ACRC-DB 3010
Speed (rpm)	Rated speed	2000 ~ 4500 rpm
Current (A)	Rated current	1 ~ 10.3 A
	Max Current	12.5 A
Frequency	Range	-

Evaporating Temperature °C	-18 ~24
Condensation Temperature °C	27 ~71
Max Compressor Temperature °C	130
Ambient Temperature °C	5 ~ 45
Suction Temperature °C	35
Noise dB	≤48
Drive Board	ACRC-DB 3010

# ROTARY COMPRESSOR OUTDRAWING DIMENSION



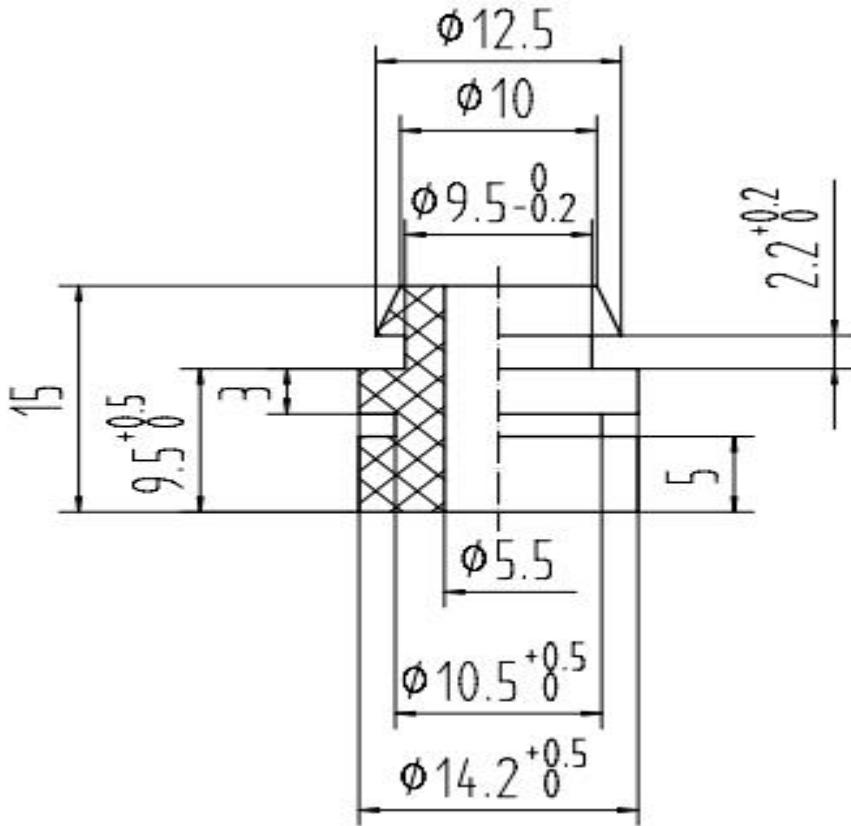
<b>Model: QX3202VDL(H)</b>	<b>Page : 4</b>
	<b>PART NO: QX32-WX</b>



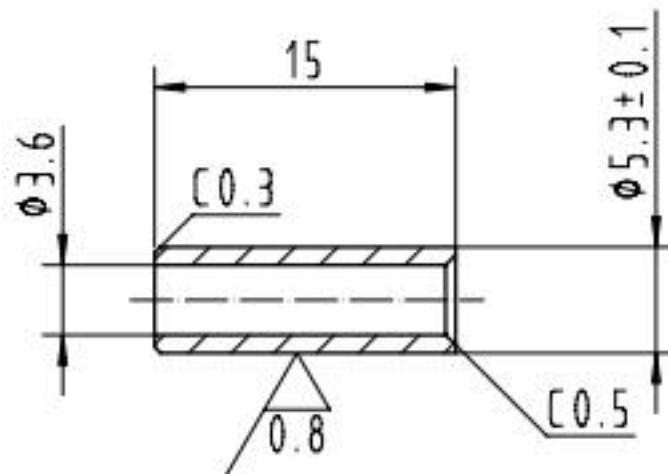
# ROTARY COMPRESSOR ACCESSORIES DIMENSION



<b>Model: QX3202VDL(H)</b>	<b>Page : 5</b>
	PART NO: QX32-35 PART NO: QX32-36



-Stuff : Rubbe  
- Hardness : 5



# ROTARY COMPRESSOR INSTALLATION & APPLICATION



<h2>Model: QX3202VDL(H)</h2>	<b>Page</b> : 7
<p><b>1. General</b></p> <p>※ Avoid installing the compressor in apparatus using refrigerants containing chlorine, such as R502, etc. Don't use filling devices that have been used for CFC or HCFC refrigerants before the refrigerant.</p> <p>※ Don't use cleaning agents containing chlorine for cleaning circuits. Make sure that there is no chlorine left if they have to be used. Special attention: The content of chlorine related substances in refrigerating systems must be below 100 PPM of the total refrigerant gas filled.</p> <p>※ Use specified drying filters for HFC-134a only. Install the filters right after the sealing pack.</p> <p>※ Tubing used in systems must be clean and free from residual oil left from the manufacturing process.</p> <p><b>2. Building vacuum</b></p> <p>For building vacuum in the system the pumping should be made from both the high and low pressure side. The vacuum should be below 0.35 mmHg.</p> <p><b>3. Filling of refrigerant</b></p> <p>Filling of refrigerant must be from the high pressure end (condenser side).</p> <p><b>4. Removing rubber plugs</b></p> <p>The compressors are filled with high purity Nitrogen at 0.01 to 0.05 Mpa at the factory and then sealed with rubber plugs and thermal shrinking plastic tubes. The plug in discharge tube should be removed first to prevent oil from bursting out.</p> <p>5. No soldering agent dusts, or other substances are allowed to get into the system when soldering compressor to tubing's. Solder material should be low melting temperature to avoid oxidization.</p> <p><b>6. Mounting compressor</b></p> <p>Use the rubber grommets supplied by the factory. Tilting should be controlled within 5°.</p> <p><b>7. Starting</b></p> <p>Compressors should not be started before they are installed into systems and refrigerant is filled. Running should be made when compressors are open to air. Allow for min. 3 minutes for internal pressure to be balanced between 2 starting.</p> <p><b>8. Grounding for safety</b></p> <p>Compressors are classified as Class I apparatus and have passed strict safety checking's prior to shipping out of the factory. Please grounding for safety.</p> <p><b>9. Clean tubing's</b></p> <p>Prevent metal chips, fibers, impurities, etc. from getting into tubing system when installing compressor. Install a 100 mesh metal filter in the tubing's.</p> <p><b>10. Refrigeration oil</b></p> <p>The special refrigeration oil RL-68H compatible with HFC-134a is used for high reliability. It has excellent thermal stability and wear resistance properties. No other additional oil is allowed to be added into system.</p>	

# ROTARY COMPRESSOR INSTALLATION & APPLICATION



<b>Model: QX3202VDL(H)</b>	<b>Page : 8</b>

**11. Refrigerant**

Use high purity (above 99.9% or above 99.95% if possible) HFC-134a only.

**12. General requirements**

- ※ Compressors should be installed into refrigeration circuits within a year after they are manufactured.
- ※ Install compressors into refrigeration circuits within 30 minutes after breaking sealing to prevent moisture from getting into the compressors.
- ※ Never pump vacuum in compressors alone.
- ※ Never make idle runs on compressors.
- ※ Do not power up compressors under vacuum conditions.
- ※ Do not bump compressors heavily, let them fall or turn around violently when handling.
- ※ Compressors should be stored in bays with good ventilation, free from the existence of corrosive stuffs. Do not store compressors at the same locations for corrosive stuffs containing acid or alkaline. Humidity should be lower than 80%.

**13.Noise and vibration**

No abnormal noise and vibration should occur during normal operation of the compressors

**14. Insulation strength**

- ※ Insulation resistance: The resistance between the shell and the windings measured by a 500V resistance tester is above 50 MΩ at normal conditions.
- ※ Voltage endurance: No arc occurs between the shell and the windings within 1 second when voltage of 1800 VAC/50Hz is applied.

**15.Airtight and mechanical strength**

- ※ Pressure for testing air-tightness: No leakage and deformation are allowed at any part of the compressor when dry air at 1.7 Mpa (absolute pressure) is filled into the compressor.
- ※ Pressure for testing mechanical strength: 8 Mpa (absolute pressure), compressed air pumped into the compressor, no bursting of the shell should occur.

16.Residual water content inside the compressor is below 100 mg.Total amount of impurities inside the compressor is below 100 mg

**17.Additional Specification**

- ※ Compressor should be installed in horizontal position. Compressor is normally worked in horizontal position but allow operated in vertical and other direction position for short time if the operation time not to exceed 50 minute.
- ※ Connection tubes between compressor and refrigerating systems must be made in flexible connection. Can put the tube around compressor one circle then join systems to avoid vibration caused by pressure force in tubing.
- ※ Cooling principle for rotary compressor is same as reciprocation compressor. Just connect with suction and discharge tube you can replace reciprocation compressor directly with rotary compressor. But make sure that discharge tube in rotary compressor is in high pressure end (condenser side). So process tube do not. So filling of refrigerant must be finished in one time and not like reciprocation.



## ROTARY COMPRESSOR INSTALLATION & APPLICATION



<b>Model: QX3202VDL(H)</b>	Page : 9
<p>compressor could slowly pour in from low pressure end. Particular bolt and nut is needed for Compressor and refrigerator bottom plate. That means you have to made bolt and nut for you to avoid sympathetic vibration we take advantage of nut should not pressure compressor tight be let compressors have some space for up and down move. To recommend you just to apply nut.</p> <p>※ After all the connection between compressor and systems finished properly you could choi absorb materials south as damping rubber to wrap tubes for further reduce vibration.</p> <p>※ In processing to replace rotary compressor with reciprocation compressor .The systems' condenser should not change but the capillary must be added 40-50CM based on original The amount of refrigerant which will filling in system also need add 40-50 gram based on or refrigerant charging.</p> <p>※ Because rotary compressor' shell connected to systems' high pressure end so first time to compressor the systems will not cooling or temperature change very slowly for a few minute. some time passed the systems will be cooling rapidly (.the time for uncoiling time is not to ex 15 minute).</p> <p>※ The link between compressor and controller is through a wire and a plug .The controller ca anywhere in refrigerator. Be careful of not let controller too close near compressor. The comp speed could be adjusted by presetting the resistor of speed to 700Ω.If feeling noise and vibrat can select 270Ω.</p> <p>※ when connecting the terminals with the controller, the plug should be connected on the hor otherwise the compressor will rotate on the wrong direction.</p>	